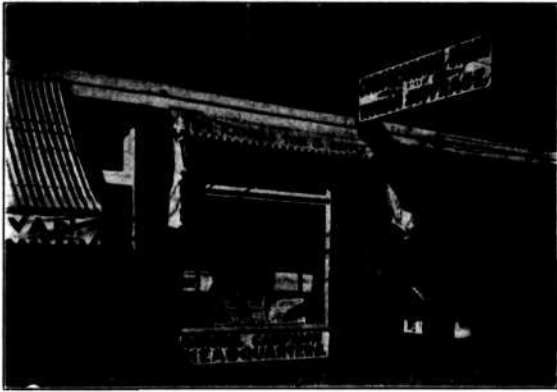


CONGRESSIONAL UNION HEADQUARTERS IN KANSAS CITY



The above headquarters are located at 724 Minnesota avenue. Mrs. G. W. Latimer and Miss L. C. Trax of Maryland, who are conducting the Federal campaign in Kansas, are shown in the picture.

MISS TRAX AND MRS. LATIMER IN KANSAS

Campaign for Federal Amendment Starts With a Bang—Fight On in Earnest.

The anti-Democratic campaign of the Congressional Union for Woman Suffrage, with headquarters at 724 Minnesota avenue, Kansas City, Kans., is on in earnest. The location of the headquarters is unmistakable. A large sign in purple and gold letters on a white ground, swinging over the street, greets the eye several blocks away. In the windows is displayed the current issue of the *Suffragist*, which contains the full suffrage record of the Democratic party, and interesting photographs of the various campaigners who will go into the nine free States.

Placards are also displayed, some of which read: "Women of Kansas! The Democratic party has blocked the passage of the National Woman Suffrage Bill. What will you do about it?"

Another reads: "No woman can make a higher use of her vote than to cast it for the extension of suffrage over the whole country. We appeal to the women voters of the nine free States, to those women who have won freedom for themselves, to cast their votes on the one issue of woman suffrage. Once well done, it will never have to be done again."

And this placard contains the gist of the entire campaign: "We ask the women of the West to lend their hand—more powerful than ours—to the great task of enfranchising all the women of America. For the sake of the women of the future we ask them to rebuke the party which has opposed the enfranchisement of women. We ask them to withhold their support from the Democratic candidates for Congress."

One of the most gratifying features of the campaign is the hearty co-operation rendered by the women from the suffrage States. Miss L. C. Trax, who, with Mrs. Edna S. Latimer, has charge of the Kansas campaign, spoke before a group of Kansas City (Kans.) women at the home of Mrs. Albertson. She reviewed the record of the Sixty-third Congress on national woman suffrage and showed how all the utterances of the Democratic President and the Democratic caucus were hostile to woman suffrage. She stated that every committee in the House and Senate has on it a majority of the Democratic party, the party in power, and that the Rules Committee had absolutely refused to report a rule making the suffrage amendment in order. She further said that since the Democratic party in the Sixty-third Congress has so successfully blocked the national woman suffrage bill, the Congressional Union would work for the defeat of the Congressional Democratic tickets in the nine suffrage States, and that the fight in Kansas would be against Senator-elect Neeley and the Democratic candidates from the eight Congressional districts.

"We are not campaigning against Mr. Neeley and Mr. Connelly because we do not approve of them as men. We are only sorry that they belong to the Democratic party. From the standpoint of the millions of women in the East who want enfranchisement, a Democratic majority in Congress is absolutely undesirable, because of the solid vote against suffrage of the Southern Democrats, 131 in number, who control the caucus vote. It is a matter of practical politics. If the women voters of the West place woman suffrage above party issues, they, too, will not want a Democratic Congress. The question of woman suffrage will then be a national issue, and no party going into power this autumn will dare ignore it."

Miss Trax left on Monday for the Sixth District, where she will visit

the most important towns, and where she will hold meetings and interview the women of the community.

The Campaign in Washington—Aid From Progressives and Republicans Refused.

Miss Margaret Fay Whittemore, in charge of the Washington State campaign, writes that already their campaign has achieved such results that both Progressive and Republican campaign headquarters look upon them with great enthusiasm, and each of these parties has even offered them the use of their own headquarters as suffrage headquarters as well.

"We have promptly refused these offers," writes Miss Whittemore. "We informed both the Progressive and Republican headquarters that we were absolutely non-partisan and could not ally ourselves with either of them. We told them that we were not opposing the Democrats because they were Democrats, but simply because they were the party at present in control of the national Government and were opposing the Federal suffrage amendment. We told them that if the Republicans or Progressives were in power and blocked our amendment, we would oppose them in the same way."

Former Deputy Commissioner of Immigration Urges Women to Forget Feelings of "Party First."

The women of Colorado are also sending many offers of help. This week Miss Josephine Roche, the famous Denver policewoman, Dr. Maude Sanders, Progressive nominee for the Colorado Senate, and Mrs. Dora Phelps Buell, formerly Deputy Commissioner of Immigration and the first woman who ever ran for the Colorado Senate, have joined the Congressional Union and entered into its election campaign. After Miss Doris Stevens, the Congressional Union organizer in charge of the Colorado campaign, had spoken to the Board of the Equal Suffrage Association of Colorado, Mrs. Buell made a most impassioned appeal in behalf of the program outlined by the Congressional Union of appealing to the women voters to oppose the Democratic candidates for Congress in all of the nine suffrage States. She said that she thought the political policy of the Congressional Union was the most intelligent and astute political policy she had ever listened to. She urged the women to forget their feelings of "party first," "Wilson, right or wrong," etc., and to yield to the call of their disfranchised sisters first. "You women talk of the help our Colorado men have given us. Have they given this help for any reason but that we as women should in turn vote for them? You women know that everything that we women have got we have had to struggle for single-handed. We must not be cowards in the face of an appeal for help from other women. We should say sisterhood first and party second. I am a Democratic woman, the same as many of the rest of you are, but let us not be blind to our present duty."

IF YOU HAVE READ THE TESTIMONY

from the Governors, Senators, etc., from the suffrage States contained in the

***Suffrage Watch*
"HOW IT WORKS"**

you have from first authority that where woman suffrage has been tried it has been successful.

Now, if you are interested to know why it has been successful, procure a copy of

Why Equal Suffrage Has Been A Success

DR. THADDEUS P. THOMAS

(Price 5 cents; postpaid, 6 cents).

This is a 15-page pamphlet, being part of an address delivered to the Equal Suffrage League of Baltimore by Thaddeus P. Thomas, Ph.D., professor of economics and sociology at Goucher College, Baltimore.

"Custom says: 'You are too pure and exalted and ethereal to drop a piece of paper in a glass box.' And many a woman replies: 'I am content. If you will flatter us like goddesses, you may ignore us like lunatics.'"

"But there's one blessed consolation about people who volunteer to be lunatics—they are capable of recovering their reason with surprising suddenness."

"THEY ARE DOING JUST THAT THING AT THE PRESENT TIME. THEY ARE BEING CONVERTED TO WOMAN SUFFRAGE BY THOUSANDS."

HAVE YOU BEEN CONVERTED? YES?

Have you converted someone else??

IT'S UP TO YOU!

You can help in the battle for woman's freedom or you can be a laggard.

To those whom you cannot see personally, SEND LITERATURE.

MRS. CHAS. J. KELLER,

Chairman Literature Committee,

222 W. Monument St., Baltimore, Md.

HELP THE CAUSE.—Mention the Maryland Suffrage News When Patronizing Our Advertisers.