

MAXIMUM QUALITY MINIMUM PRICE

A. L. Sparks' Emporium

A SPLENDID STOCK OF Dress Goods

When the quality can be thoroughly depended upon and the price is entirely moderate, the buying proposition becomes a very simple matter.

Here we offer you the very best that is possible to buy; show an extremely large assortment including all the new and popular shades and the range of prices makes it possible for every one to find something here exactly as wanted.

SILKS SILKS SILKS

The price of silks have advanced very materially but we are still offering our guaranteed 36 inch black taffeta at \$1.00 per yard.

Over twelve hundred yards sold in the preceding twelve months without a dissatisfied customer.

DOMESTICS DOMESTICS

We are selling staple muslin at wholesale prices, our purchases before the advance enable us to do this.

MILLINERY . . . MILLINERY

The Rich and Refined in Millinery has full an eloquent expression in this department of our store.

Efforts intelligently directed are productive of results beyond precedent in the all-important questions of style, elegance and quality.

Your attention is directed to our extremely low prices.

This Department has stood the test of a careful buying public for years and is now complete with an array of stylish and up to-date garments not often seen except in a city store.

Our well-known low prices are a large factor in the successful business done in this department.

Come and see us, we can show you our stock much better than we can tell you about it

Arlington L. Sparks

CHESTERTOWN, MARYLAND.

LOOK OUT FOR A. COHEN'S ADVERTISEMENT NEXT WEEK

He will convince all his customers that he is the Wanamaker of the District. The large cargo of Xmas Goods will be opened and ready for exhibition by next week. Come and bring your children, it's a treat for the old and young.

Bring me your Butter, Eggs, and Poultry. I need them.

Abe Cohen, Sandy Bottom

WARNING.

All persons are warned not to trespass on the lands known as Conneys Right and Deep Point Farms with dog, gun or otherwise. Having rented the river and Eight shores to a ducking club there will be no shooting allowed there unless accompanied by a club member.

JOHN G. WESTCOTT.

CAUTION.

All persons are forewarned from trespassing upon the properties of the undersigned with dog, gun or otherwise, as the law will be strictly enforced, viz: The Brown and Thomas farm, tenanted by Joseph S. Trew; the Jump farm, tenanted by J. Frank Loveston; and the Heybold farm, tenanted by Walter R. Kendall.

THOMAS G. WROTH.

Kent News

ESTABLISHED 1841.

Subscription - \$1.00 PER YEAR

Wm. B. USILTON, JR. PUBLISHERS AND EDITORS.

SATURDAY, DECEMBER 5, 1908.

Wilmington Conference.—Official announcement has been made that the next session of the Wilmington M. E. Conference will convene on March 17th, 1908 at Milford, Delaware. Bishop David H. Moore, of Cincinnati, has been chosen as the presiding officer of the conference. The programme for the conference will soon be announced through the official organs of the Methodist Church.

Schooner Ashore.—The Schooner Corissa, owned by Capt. Medford M. Larimore, of Centerville Landing, and in command of Capt. Lemuel Morris, was beached off Kent Island last Wednesday night. The vessel had on board about 75 tons of hard coal for her owner. Immediately after the vessel ran ashore Capt. Morris deserted her, taking with him the only yawl boat and leaving the crew without any provisions. They were rescued by some fishermen the next afternoon. It is feared that the vessel will be a total loss on account of the wind and low tides that prevail at this time of the year on the bleak shores of Kent Island.

Cobles Con.—And now it is the cobles corn. A year ago H. J. Sconce and Taylor Gantloof, of Vermilion county, purchased a quantity of seed corn in Indiana. In the shipment was a fresh ear, instead of the ordinary cob, had a core of husk, the grains being neatly wrapped on the soft foundation like peas in a pod. Mr. Sconce was impressed with the novelty of the find and decided to plant all the kernels he found on the farm. To his surprise the ears produced this fall were found to be exact reproductions of the single ear. These ears produced this year yielded as much corn as those provided with cobs, while the kernels were large and soft. The ears were well filled, kernels even growing among the silk.

TO ESTABLISH FARMS.

The Pennsylvania Railroad Company has determined to establish experimental farms on every one of its divisions and to place in charge of them the very best farming talent which can be had in this or any other country. These are to be established for the following purposes: First, to demonstrate to the farmers and truckers the best and most profitable crops to grow on their different lands; and second, to give the farmers and truckers the best and most profitable selection of the best markets for the shipment of their produce.

These experimental farms are to be established as follows: one on the Delaware division, one on the line of the Baltimore, Chesapeake and Atlantic Railway, one on the line of the Maryland, Delaware and Virginia Railway and one on the line of the New York, Philadelphia and Norfolk Railroad. It is the intention of the Pennsylvania Railroad to purchase good farms and establish thereon the best experts in the different lines of agriculture. The crops of experts will be composed of men who can give the best advice as to the kind of crops the different soils will best produce, as to the kind of truck to plant and the way to plant it, as to fruits, berries and grain crops and the best methods to use and the best method of cultivation. In fact, these farms will be models in their line and will be at the disposal of the farmers and for their information.

President McCrea is of the opinion that there are hundreds of thousands of acres of land on the peninsula which are now producing what nature intends them to produce and that these farms should within a few years so create the conditions along the most improved lines as to increase the output of produce and fruits enough to cause the railroads to double their train capacity to meet the demand. The Long Island Railroad has had these farms in operation for several years, and it has caused the lands along the coast to blossom that they resemble the garden farms of England. There should be no waste land on this peninsula, so the railroad people think, but every acre should be under cultivation all the time and every acre should be made to produce at least twice what it is now producing.

RAILROAD DAMAGE SUIT

The damage suit case of Miss Frances Karabinos against the Delaware and Chesapeake and P. B. and W. Railroad Companies was brought to a sudden termination last Friday afternoon, after all the testimony had been taken. The jury in the case was impaneled on the Tuesday afternoon previous, and for three days had listened patiently to the evidence produced by the plaintiff and the defendants. The sudden termination of the case was caused by the court granting a prayer offered by the defendants which declared Miss Karabinos a trespasser on the railroad property at the time of the accident, and also charging her with contributory negligence.

Miss Karabinos sustained injuries at Kenton, Del., in the summer of 1907 while attempting to cross the railroad tract at the station just in front of the engine, and from those injuries she ultimately lost her foot and the narrow half of her leg. She sued the railroad companies in the Circuit of Caroline county last April and received a verdict of \$17,000 damages. At the May term of the Circuit Court for Queen Anne's County, the defendants argued the case for a new trial, upon the ground that the Court had not acted in accordance with the evidence in granting a prayer. A new trial was granted and the case set for the November term of Court.

The evidence produced in Queen Anne's County was substantially the same as that given in Caroline, but the Court, sitting as the Judges of the Circuit, directed the jury to return a verdict for the defendants, upon the ground above stated.

The counsel for the plaintiff declare they will take the case to the Court of Appeals, and should they receive a reversal of the lower courts decision, will again try the case before a jury in Queen Anne's County.

There is but little doubt that Miss Karabinos would have received a verdict for at least the amount of damages given her in Caroline county had the case gone to the jury.—Centreville Observer.

IDEAL EDUCATION!

What is the Best Education Our Public Schools Can Give Boys and Girls?

MRS. JOS. W. HARPER.

The first inquiry is, "What is the end to be attained?" This is not only the first but the essential inquiry. It underlies all questions concerning means or methods, and is, indeed, the decisive test of their value. The more clearly the end to be attained is seen, the greater the inspiring interest, and the more skillful the effort. But the end must be a true one. A wrong end is a radical and fatal error in education. Its subtle and insidious influence, its waste of energy and opportunity. It is better to have no aim than a wrong one. It has been shown that the comprehensive end of education is to prepare a man to fulfill the purposes of human existence; that is, to live completely. This includes not only the preparing of man for the highest well-being and happiness, but for the right discharge of all the obligations and duties of his life. He is not only confronted by nature with her forces, laws, and life, but on every side he is surrounded by human relationships. He is to be the head of a family, a member of society, a citizen of the state, and a subject of Divine Government; and out of these relations flow duties and responsibilities of the highest importance. Manhood is, in a word, the comprehensive end and supreme test in school training. Man is endowed with a nature capable of three distinct classes of activities: intellectual, moral or spiritual, and physical; and this fact is the basis of the three-fold division of education now generally recognized. These are designated by the terms intellectual education, moral education, and physical education, each having distinct ends, and these being attained by quite distinct processes. We do not mean that these processes are always separated in school training. They are not only more or less united throughout the course of training, but often blend in the same exercise. The immediate ends of intellectual training are three:—(1) the acquisition of knowledge, for guidance, for growth, and for enjoyment; (2) the development of mental power, including the power to acquire knowledge, and to apply or use it; and (3) the acquisition of skill, or readiness. In our public schools our chief aim is to give the child the power to acquire knowledge, and to apply or use it, and (3) the acquisition of skill, or readiness. In our public schools our chief aim is to give the child the power to acquire knowledge, and to apply or use it, and (3) the acquisition of skill, or readiness. In our public schools our chief aim is to give the child the power to acquire knowledge, and to apply or use it, and (3) the acquisition of skill, or readiness.

ALABASTINE AND MURESSO ONE COLD, THE OTHER HOT. The coating for walls, we have them both, and all colors at the same low price, 35c the 5 lb package.

PAINTS

Ready mixed B. P. S. No better made. Lewis' Pure Lead, Masury's Railroad White and other cheap leads.

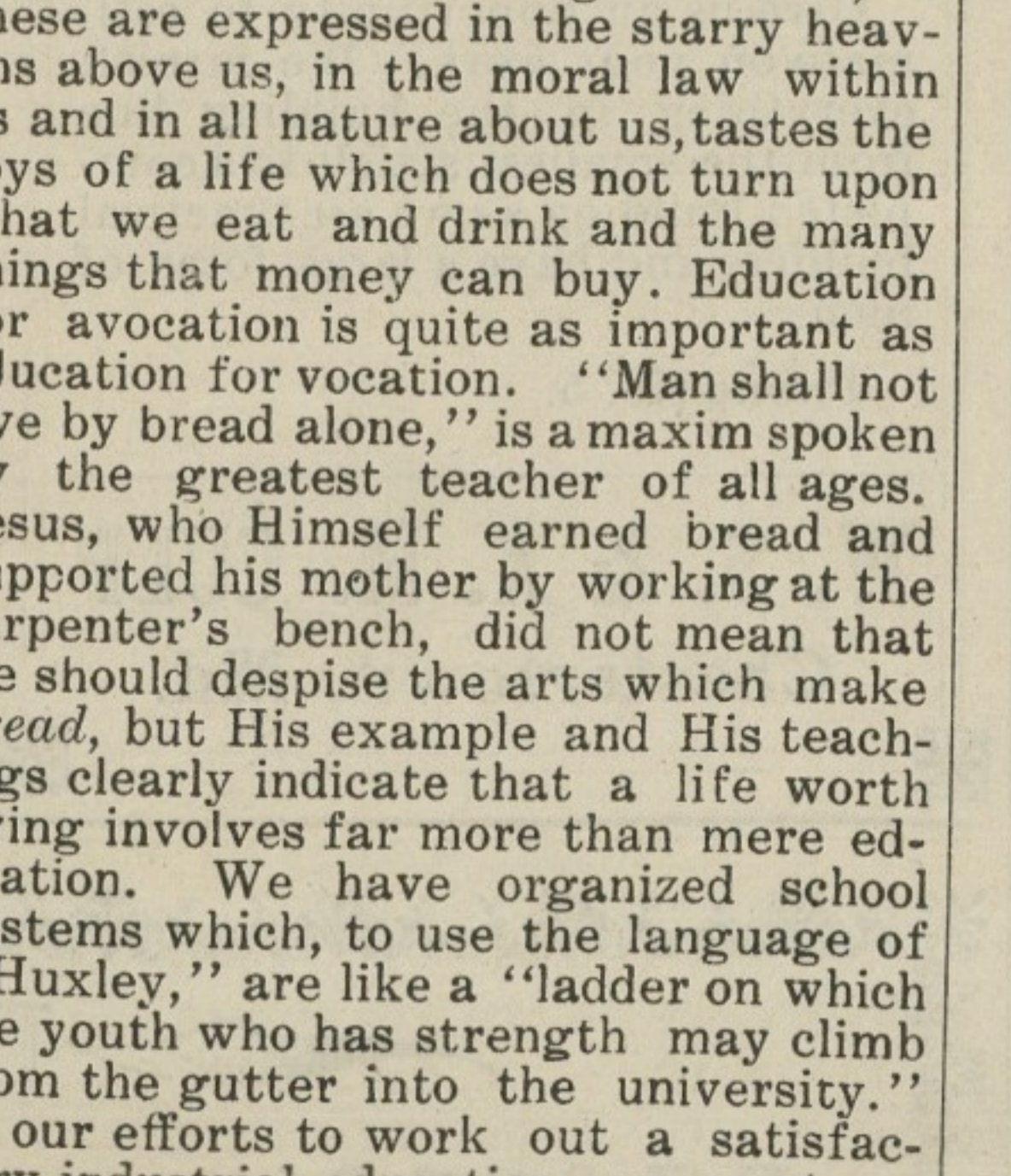
OILS, OILS

Pure Lined Oil and Turpentine, Ruddy Harvester Oil, Cylinder Oil, Gas Engine Oil, Automobile Oil, Neatsfoot Oil, Harness Oil, Lard Oil.

JOHN BARTLEY CHESTERTOWN, - MD.

CHESTERTOWN Marble and Granite Works

J. WILLIAM KIRBY, Proprietor (Successor to A. L. Davidson)



MANUFACTURER AND DEALER IN ALL KINDS OF MONUMENTAL AND CEMETERY WORK Prices Reasonable Work Guaranteed Cemetery Posts \$1.00 up

FOLEY'S KIDNEY CURE

WILL CURE YOU

of any case of Kidney or Bladder disease that is not beyond the reach of medicine. Take it at once. Do not risk having Bright's Disease or Diabetes. There is nothing gained by delay.

50c. and \$1.00 Bottles. REFUSE SUBSTITUTES.

DOCTORS MISTAKES

Are said often to be berled six feet under ground. But many times women call on their family physicians, suffering, as they imagine, one from dyspepsia, another from heart disease, another from liver or kidney disease, another from nervous prostration, another with pain here and there, and in this way they present alike to themselves and their easy-going or over-busy doctor, separate diseases, for which he, assuming them to be such, prescribes his pills and potions. In reality, they are all only symptoms caused by some common disease. The physician, ignorant of the cause of suffering, keeps up his treatment until large bills are made. The suffering patient gets no better. The doctor does the wrong treatment, but probably worse. A proper medicine like Dr. Pierce's Favorite Prescription, directed to the cause would have entirely removed the disease, thereby dispelling all those distressing symptoms, and insulating comfort instead of prolonged misery. It has been well said, that "a disease known in its cause is cured." Dr. Pierce's Favorite Prescription is a scientific medicine, carefully devised by an experienced and able physician, and adapted to woman's delicate system. It is the greatest earthly boon, being unexcelled as an appetizing cordial and restorative tonic. As a powerful invigorating tonic "Favorite Prescription" imparts strength to the whole system and to the organs debilitated by overwork. For overworked mothers and feeble women generally, Dr. Pierce's Favorite Prescription is the greatest earthly boon, being unexcelled as an appetizing cordial and restorative tonic.

As a powerful invigorating tonic "Favorite Prescription" imparts strength to the whole system and to the organs debilitated by overwork. For overworked mothers and feeble women generally, Dr. Pierce's Favorite Prescription is the greatest earthly boon, being unexcelled as an appetizing cordial and restorative tonic. As a powerful invigorating tonic "Favorite Prescription" imparts strength to the whole system and to the organs debilitated by overwork. For overworked mothers and feeble women generally, Dr. Pierce's Favorite Prescription is the greatest earthly boon, being unexcelled as an appetizing cordial and restorative tonic.

ALABASTINE AND MURESSO

ONE COLD, THE OTHER HOT. The coating for walls, we have them both, and all colors at the same low price, 35c the 5 lb package.

PAINTS

Ready mixed B. P. S. No better made. Lewis' Pure Lead, Masury's Railroad White and other cheap leads.

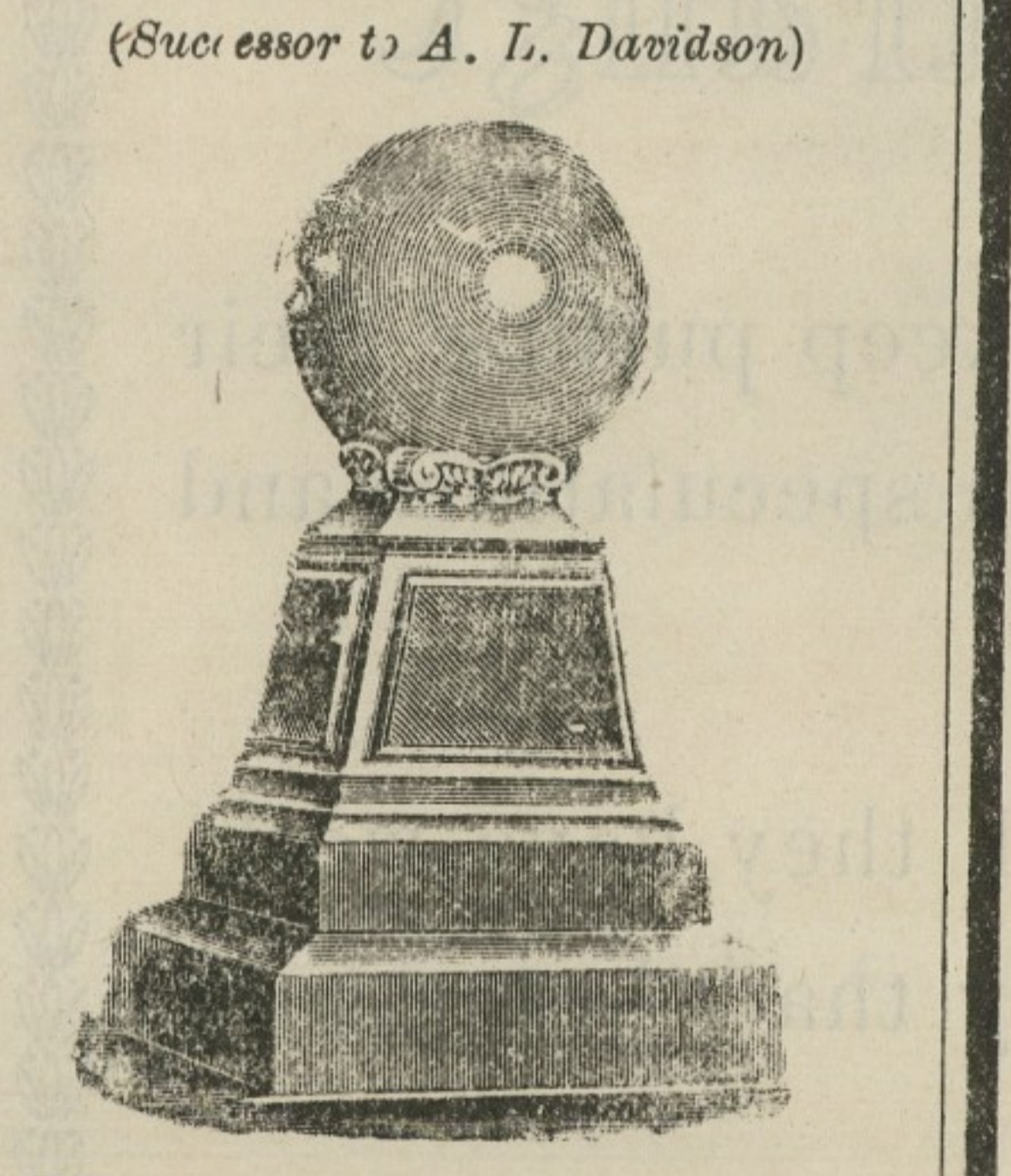
OILS, OILS

Pure Lined Oil and Turpentine, Ruddy Harvester Oil, Cylinder Oil, Gas Engine Oil, Automobile Oil, Neatsfoot Oil, Harness Oil, Lard Oil.

JOHN BARTLEY CHESTERTOWN, - MD.

CHESTERTOWN Marble and Granite Works

J. WILLIAM KIRBY, Proprietor (Successor to A. L. Davidson)



MANUFACTURER AND DEALER IN ALL KINDS OF MONUMENTAL AND CEMETERY WORK Prices Reasonable Work Guaranteed Cemetery Posts \$1.00 up

FOLEY'S KIDNEY CURE

WILL CURE YOU

of any case of Kidney or Bladder disease that is not beyond the reach of medicine. Take it at once. Do not risk having Bright's Disease or Diabetes. There is nothing gained by delay.

50c. and \$1.00 Bottles. REFUSE SUBSTITUTES.

Cash Dealer Chestertown, Md

R. F. PARKS & SON

Highest Price for EGGS Next Tuesday

New FALL Merchandise Arriving Daily Special Values! Special Prices!

Outing Flannel Values, 8c to 8 1/2c, go 10 yds for 62 1/2c
Outing Flannel Values, 10c to 10 1/2c, go 10 yds for 86c
Dress Gingham Values, 10c to 12c, go 10 yds for 86c
Canton Flannel Values, 7c, go 10 yds for 58c
Muslin Goods, soft finish, bleached, 10c and 12 1/2 values, 10 yards for 78c.
Table Linen, special 25c values, 2 1/2 yds for 50c
Crash, good twill for Roller Towels, 3c per yard
NEXT TUESDAY—10 yards very best Apron Gingham manufactured for 62 1/2c.
NEXT TUESDAY—One pair 80x90 Bleached Sheets for \$1.00.

Special Values in Towels, from 5c to \$1.00. Look at our stock.
BLANKETS, BLANKETS, White, Red, Grey and Plaid. Blankets for the rich, blankets for the poor and blankets galore. Oh, we have them, from 53c per pair to \$10.50. More blankets, better blankets, than all.
COMFORTABLES, TOO. New stock, fluffy, light. \$1.00, 1.25, 1.62 1/2, 2.00, 2.75, 3.87, 5.00.
QUILTS for single beds, Quilts for double beds, Quilts with fringe, Quilts without, in prices ranging from 75c to \$4.00.

Dress Goods

SUPERB HANDSOME BEAUTIFUL
All the very newest up-to-date patterns. We have purchased this line carefully, using good judgment and rare taste. Allow us to show you our stock.
A very beautiful Broadcloth, all colors, and 52 inches wide, at 98c
A choice line, all colors, Broadcloth, ranging in price per yard from 98c to \$1.75
Our Chiffon Broadcloths, 52 inches wide, can never be duplicated at \$1.98
We make a specialty of Black Dress Goods, Mohairs, Serges, Cheviots, American Cloth. A beautiful Herringbone Cheviot at 85c
Fine 36-inch Serges, all colors and all wool, from 48c to 57 1/2c
Extra All-Wool Serges, colors... 60c to \$1.25

Silks Silks Silks

ALL COLORS

A Very Handsome Black Taffeta, 36 inches wide, at 98c

Mattings Mattings

ALL KINDS ALL COLORS ALL QUALITIES
Japanese and Chinese Crex Grass Matting, per yard, from 12 1/2c to 60c

Linoleums Oil Cloths

Linoleums from 39c square yard to 65c.

Carpets Carpets

All-Wool Ingrains New and Beautiful Patterns
Cotton Chain, Wool Filling, per yd 20c to 50c
All-Wool, absolutely all-wool, 3-Ply; also Stair Carpets, Best Brussels and Ingrains.

Leather and Gum Boots

Shoes, Rubbers. Anything and Everything.
Boots and Shoes of every Description in this line.
The Best Man's Blucher Satin Calf Shoe in the town for \$1.24

Horse Blankets, Robes

A Handsome line of Extra Size Horse Blankets. Large Size Blankets.

R. F. PARKS & SON,

CHESTERTOWN, MARYLAND